

FOSEN TOOLS

CONTAINER HEAVY LOAD 20'RIGHTSIDE ACCESS

Incl. Racking, 5 ea. Tactical lockers, Low Cube



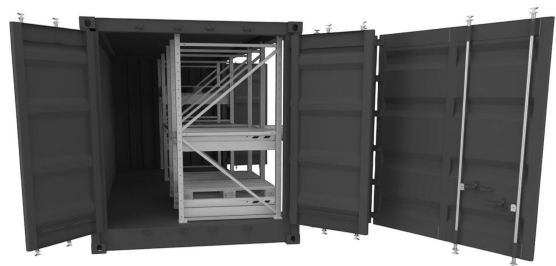
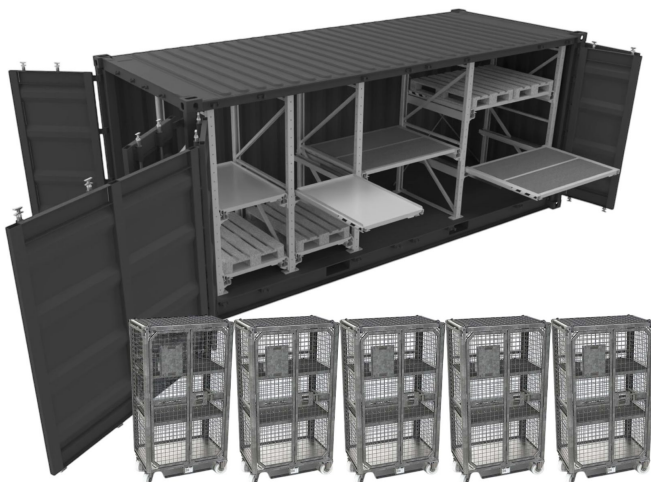
CONTAINER HEAVY LOAD 20'RIGHTSIDE ACCESS

ALWAYS READY

20 foot low cube container including Heavy Load racking system fitted for Aviation Ground Support Equipment (GSE). Can be custom fitted to each and every GSE product to maximize deployment efficiency.

Can be used in normal operations or in deployment mode.
All products have a fixed place, so only take out what is needed at any given time.

- Custom-Fitted Design:
Tailored to each GSE product to maximize deployment efficiency.
- Heavy-Duty Racking System (350 - 1000 kg per shelf) - Custom fitted for Ground Support Equipment
- Pull-Out Heavy-Load Shelving: Each shelf features a transit lock for enhanced safety during transport.
- Robust Construction: Engineered for durability with a heavy-load racking system designed for demanding operational environments.
- Aviation-Grade Aluminum Pallets: Available for optimized handling and long-term reliability.
- Equipped with 5 ea. Sharkcage Tactical Locker CWM units, offering secure and organized storage for critical equipment.
- Integrated Aluminum Ramp: Delivered with a custom-fit aluminum ramp for the container's end opening, ensuring efficient loading and unloading of Tactical lockers.
- Power, Heater and LED lights integrated into solution
- Air Transport Compatibility: Fully compatible with Hercules C-130, C-5, and C-17 airfreighters for rapid global deployment.



TACTICAL LOCKER CWM

Rolling cage with forklift pockets, sling loading points, locking mechanism compatible with padlock, corrosion protected by hot-dip galvanization, cargo net on the top, includes weather cover and bracing. Comes standard with 2 ea. shelves. Many popular accessories available.

External dimensions	W1050 x D670 x H1910mm
Weight	170 kg
Capacity	1360 kg
Shelf Capacity	455 kg
FT art.no	116616
Nato Stock No (NSN)	8145-01-512-1015
Material	HDG Steel
Stackability	None
Opening	W910 x H1600mm
Shelves	2
Shelf Position	30



CONTAINER HEAVY LOAD 20' RIGHTSIDE ACCESS



**FOSEN
TOOLS**

Fosen Tools AS | Industrigata 1, 7130 Brekstad | NORWAY
phone: +47 72 51 51 20 | post@fosen-tools.no | www.fosen-tools.no